



A beautifully restored apartment on the second floor with 114 square meters of living space, situated in an **XVIII century listed building**, located in the centre of vibrant Palafrugell (Girona).

A quiet apartment with nice views from the charming, sunny terrace (70 square meters).

Palafrugell is in the heart of “Baix Empordà” (Costa Brava) only 3km from the magnificent **beaches of Calella de Palafrugell, Llafranc and Tamariu.**

Apartment

Can Felip: apartment 2





Apartment

Can Felip: apartment 2





Apartment

Can Felip: apartment 2





Apartment

Can Felip: apartment 2





Apartment

Can Felip: apartment 2





Apartment

Can Felip: apartment 2





Apartment

Can Felip: apartment 2





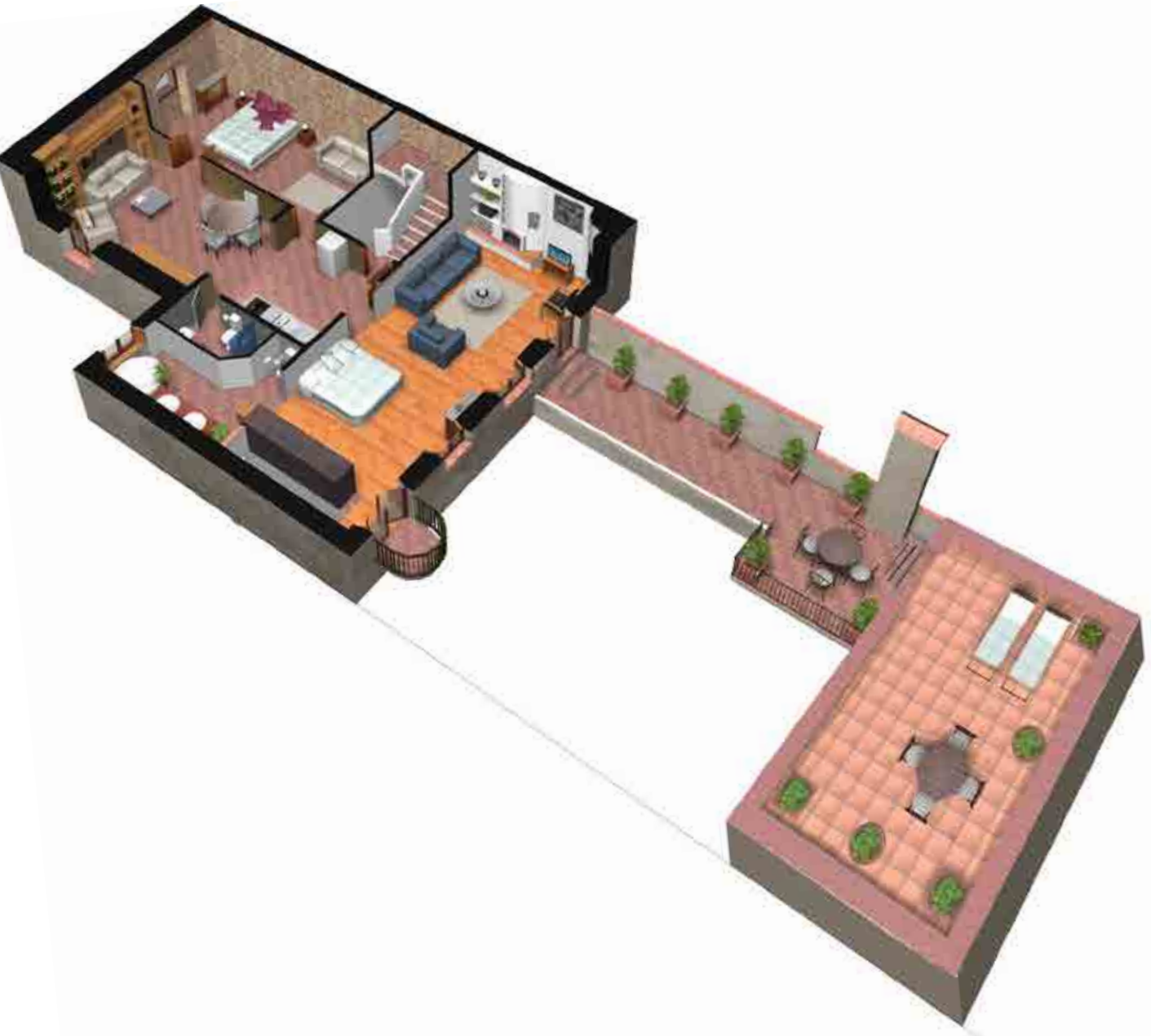
Apartment

Can Felip: apartment 2

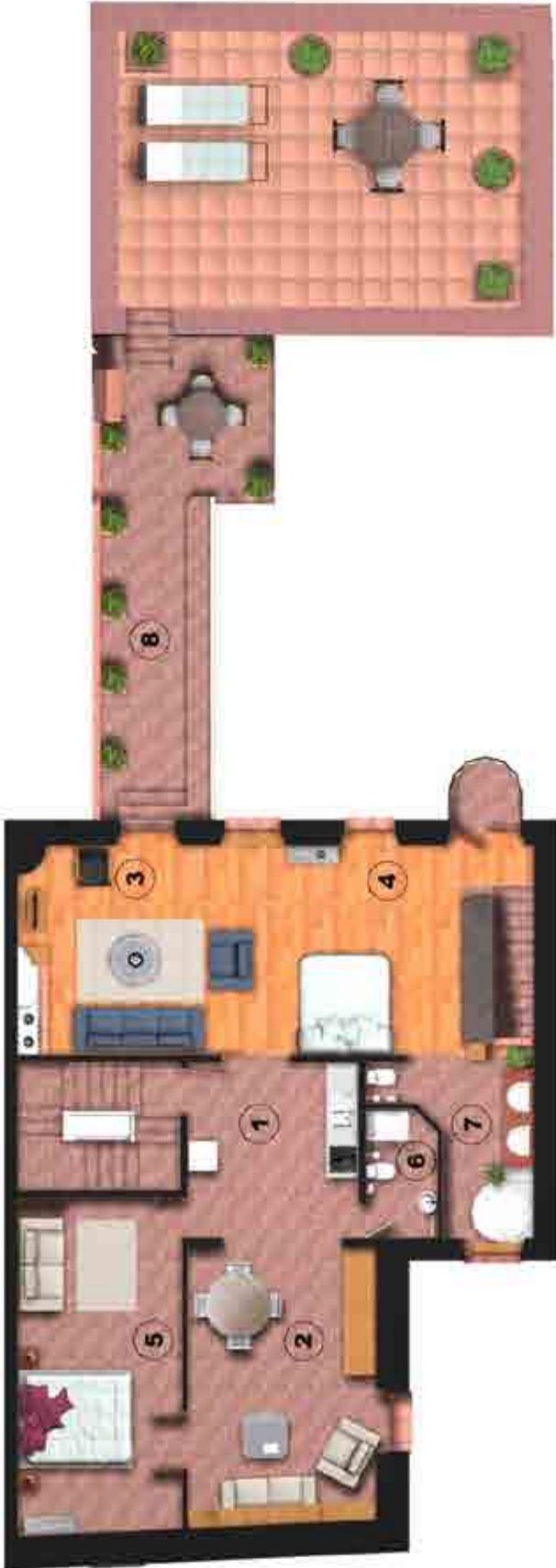




floorplans



floorplans



Flat 2_Raval Superior 6

<i>Id.</i>	<i>Description</i>	<i>Area (m²)</i>
1	Kitchen	13.08
2	Dining room	21.54
3	Living room	24.31
4	Master bedroom	19.58
5	Bedroom	22.69
6	Bathroom	3.82
7	Bathroom	8.84
8	Terrace	70.45
NET INTERNAL AREA		113.86
GROSS INTERNAL AREA		184.31



characteristics

114 m²
 5-7 pax
 70 m²
 2
 8€/day

2 Bedrooms

Bedroom 1: 1 Double bed 160 x200cm + 1 double sofa bed 140 x190cm with ensuite bathroom
Bedroom 2: 1 Double bed 160 x190cm + 2 single beds 90 x200cm

Terrace & Balcony

Outdoor table with 6 chairs
 4 Sun beds
 Barbecue

Equipment & Services

TV: Astra satellite	Fire place
DVD / Hi-Fi	Washing machine
Wifi	Iron & iron board
Fans	Towels & bed linen provided
Central heating	Library

Kitchen

Induction hob	Kettle
Fridge-freezer	Blender
Extractor hood	Nespresso coffee machine
Microwave	Toaster
Dishwasher	Equipped with crockery & utensils

Communications

Train: 25Km (Flaçà's Station) / 35 Km (Girona)	Airport: at 40 Km (Girona) / at 130km (BCN)
Coach: <100m Sarfa (Sarbus group)	Beaches at 3 Km: Calella, Llafranc & Tamariu



rental prices

Weekly Rent

Low Season	Middle Season	High Season
595€	750€	960€
October to May	June & September	July & August*

Weekend Rent (2 nights)

Low Season	Middle Season	High Season
160€	215€	335€
October to May**	June & September**	Bank Holidays**

ü July & August* : from Saturday to Saturday (minimum 7 nights). Other months minimum 2 nights.

ü Bank Holidays** will be considered as Middle-High Season (please contact us).

ü Check In or Out wont be allowed on the 25th and 26th of December.

ü Final Cleaning: **50€**

ü Required **300€** as a deposit (refund on the Check Out). Credit cards accepted.



ü Capacity : **Basic 5** pax / **Maximum 7***** pax

Additional Services:

- *** An extra cost of **10€/day** will be charge for each person over Basic Capacity.
- A baby cradle is available. Surcharge of **15€**
- We only accept well trained pets. Surcharge of **10€/day (Maximum 40€)**.
- Optional: 1 Extra Set of Bed linen: **8€**
- Optional: 1 Extra Set of Towels (1 for bath + 1 for hands): **6€**

§ Contract Period: Seasonal lease

§ Electricity & Water: Included

§ Prices: **VAT Included**

Car Park: OPTIONAL 8€/day

For further information contact:

+34 676 194 112 | info@gemric.es | www.gemric.es

· barcelona · spain ·



LOCATION

“**Can Felip**” is located in the centre of vibrant Palafrugell (Girona) a 50 meters from the church and the market. In Palafrugell every Sunday the town holds its weekly market, where you will find everything you need, while the **daily market** provides fruit, vegetables, meat and fish.

In June, don't miss the **Spring Festival** celebrations, featuring the grand parade of floats.

The town of Palafrugell has an additional attraction: “**Formigues Islands**” a highly recommended spot for scuba diving.

Another part of the municipality is made up of the nuclei of **Calella, Llafranc and Tamariu**, on the coast. These former fishermen's districts have become important tourist centres thanks to the beauty of their setting and their wide variety of restaurants and activities. The old fishermen's neighborhoods grew up around the coves and they have conserved their **nautical tradition**; here.

In the summertime, you can enjoy the **concerts of havaneres** (sailors' songs), the most famous of which is held in Calella.

Another emblematic spot is the “**cape of Sant Sebastià**”, with its lighthouse, a chapel and the remains of an Iberian settlement. Nearby, in Calella, you can also visit the castle and botanical garden of Cap Roig.

It is a one and a half hour drive north of Barcelona, and 40 minutes from Girona airport. It only takes 45 minutes drive to the French border.



SURROUNDING AREA

Enjoy the **surrounding secluded beaches** of: Calella de Palafrugell, Llafranc & Tamariu (**only at 3 km**).

Small sandy bays with rocky headlands, pine trees and clean water. Or if you prefer in **Pals beach**, at 14km. you'll find a **wide-open 3.5 kilometer long** beach with the Medes Islands in the background. Its special topography makes it the ideal spot to practice all types of water sports like windsurfing, Sailing or Flysurf.

Around Palafrugell you will also find riding clubs that will satisfy horse lovers. Also routes and **courses for beginners**. And if you like doing sport playing **tennis, paddle, football, basketball, beach volleyball and anything you could imagine... even skateboarding** at the Palafrugell skate park.

At 12km is **La Bisbal d'Empordà** famous for its ceramics. Close by are the Roman ruins at Ullestret, and many other historic medieval villages. **Girona - capital of the province**, with its Roman and Arabic history which can be seen in the old part of the city, also has a modern side, with great shopping, restaurants and night clubs (**a 35 minutes drive**).

In the town of Figueres (**at 40Km**) you will find **Salvador's Dali Museum**.

RECOMMENDATIONS: Monells, Peratallada, Ullastret and Begur they are very close from Pals and is worth visiting.



TRAVEL DETAILS

AIRPORTS: The nearest international airport is Girona (40 Kms), Car hire available at the airport. Ryanair flights from Blackpool, Bournemouth, Doncaster, East Midlands, Liverpool, Luton, Stanstead in the UK and many other European cities.

Barcelona airport (90mins by car or train). Scheduled services.

TRAINS: Nearest station Flaçà, (25 Kms), with 30min. connections to Barcelona and regular service into France.

MOTORWAY: AP-7 runs to Barcelona and to the French border (45mins). Nearest junction 30Kms.



ACTIVITIES AT THE HOUSE & SURROUNDING AREA

Palafrugell offers visitors the chance to take **3 interesting routes:**

- 1.- Route with **Josep Pla:** famous writer born in the village, which allow us to see different parts of town.
- 2.- The **cork museum:** gives a full description of this industry that has influenced the evolution of the village
- 3.- The **old center** still conserves its medieval structure, presided over by the church of St Martí.

On foot or by bicycle and at your own speed browse as far as you like, along the network of 350km of paths that is currently to be found at the Costa Brava, or through the rice fields or along the dunes of the beach, to magnificent viewpoints at the seaside or the archaeological remains of the Empordà...and of course, along the **coastal paths:** an impressive route that comes down to the sea between cliffs and joins up all the beaches of the Costa Brava.

The hills of the Gavarres, (10 minutes drive) are well known for walking and mountain biking.

However, you can also discover the Empordà from the air... in a **balloon, a helicopter or an ultra-light aircraft**, you will have a unique experience to remind you of Palafrugell.



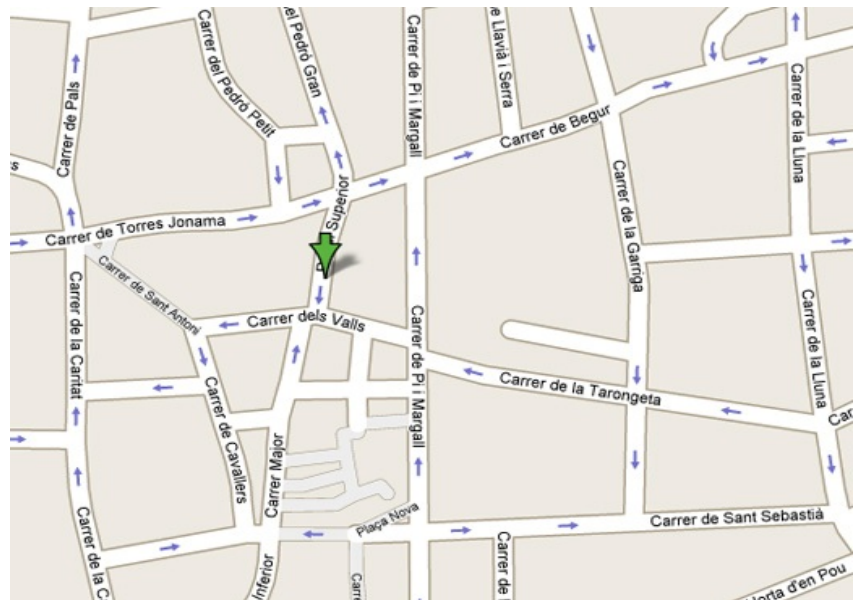
GOLF

Recently the Costa Brava was voted by the IAGTO (International association of international Golf Tour Operators) as the "best emerging golf destination world wide".

The moderate climate of the zone make Palafrugell an ideal place for enjoying Golf. There are 2 golf courses in the neighbour town (Pals Golf Club: with 18 holes, is beside the sea, on dunes covered by an large pine wood and the other course named Golf Serres de Pals). And if you are a beginner, you can start out at one of the many Pitch & Putt courses around Pals.

There are 11 courses all within an hour's drive of "Can Felip", 4 of which are considered amongst the best in Spain : **EMPORDA** (5 min. drive), Home to the European Tour Qualifying School , 27 holes, Par 71 and 72. **PALS** (5 min drive) 18 holes, par 73. **PGA CATALUNYA** (50 min drive), Ranked in the top ten best golf courses in Europe- 18 holes par 72. **GIRONA** (40 min drive) 18 holes, Par72.

Others are Perelada, Torremirona, Mas Pages, Gualta, Serres de Pals, Mas Nou (d'Aro) and L'Angel de Lloret.



location





For further information contact:

+34 676 194 112 | info@gemicric.es | www.gemicric.es

· barcelona · spain ·

Apart. 2 in Palafrugell: C/ RAVAL SUPERIOR 6 (Girona)